

COMPANY PROFILE

Unit F 2nd Floor, Westgate Tower
Investment Drive, Madrigal Business Park
Ayala Alabang, Muntinlupa City
Tel (02) 8821-3699
Email sales@newgenlink.com.ph

www.newgenlink.com.ph

Our Company



New Generation Link Contracting and Trading Services, Inc. (NGL) was established in September 14, 2015 by a group of Network Professionals with respective specialization in Data/Voice Communications, Network and other IT-related discipline. The core business of NGL is to engage in the delivery of Structured Cabling for Data, Voice and Video connectivity solutions, including Network Equipment.

It is our aim to help our customers to focus on their primary business by providing end-to-end management of structured network cabling solution, commissioning of network equipment, and delivery of other IT-related services.



OUR VISION

The preferred partner in contracting and trading services propelled by committed , professional, technical and non-technical experts and staff and state-of-the-art systems and support services.



OUR MISSION

To provide creative and innovative solutions to enhance our partners' productivity and growth.



OUR CORE VALUES

We value integrity, commitment, professionalism, quality & service excellence

Our Products



Our Partners



Client Portfolio



CERTIFICATIONS

- Certified Panduit Structured Cabling Installer (Copper & Fiber Optic)
- BOSH/COSH Certified Safety Engineers
- Registered Licensed Electronics/Electrical Engineers
- Fluke Certified Cabling Test Technician (Associate)
- Accredited Structured Cabling Partner of Techconek, Inc. for CCTV System
- Avigilon Accredited Authorized Partner
- PCAB AMOs (Authorized Managing Officers)
- CCNA (Cisco Certified Network Administrator)
- PCAB Certified



OUR EXPERTISE

- Structured Cabling System
- Access Control System
- Data Network
- Design & Consulting
- CCTV System
- PABX Telephony
- Electrical Auxiliary System

MAJOR PROJECTS

- Semiconductor Manufacturing
- BPOs
- Electronics Manufacturing
- Manpower Agency
- Schools
- Courier Service
- Food & Beverage Industry
- LGUs
- Construction Industry
- Mall Stores
- Power & Mining Industry



Client : Semiconductor Manufacturing
Inclusive Dates : 2015 - Current
Status : Sub-contractor

Projects:

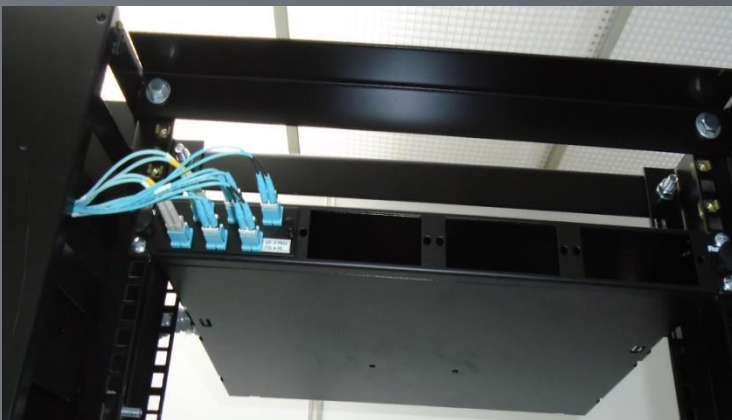
- Design, installation and maintenance of Inter/Intra-building Fiber Optic backbone infrastructure from IT Data Centre to MDFs/IDFs
- Design, installation and maintenance of Copper Cabling infrastructure for Voice/Data
- Design and installation of Wireless Network infrastructure
- Rehabilitation of Voice/Data Network infrastructure
- Concurrent in-house service provider for structured cabling facilities of the sub-client



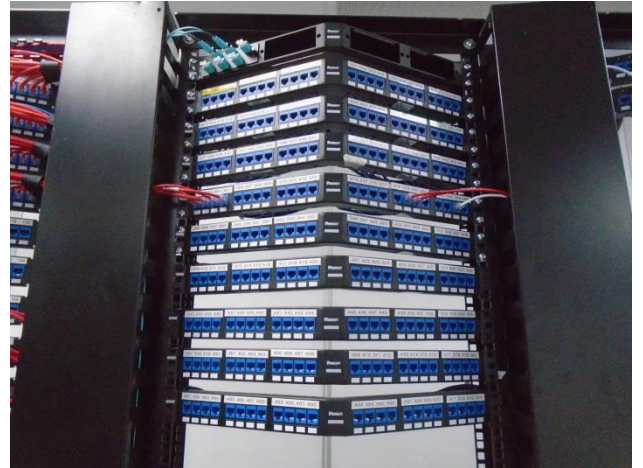
MDF/IDF Distribution Cabinet



FOC Distribution/Port Connection



MDF/IDF Distribution Cabinet

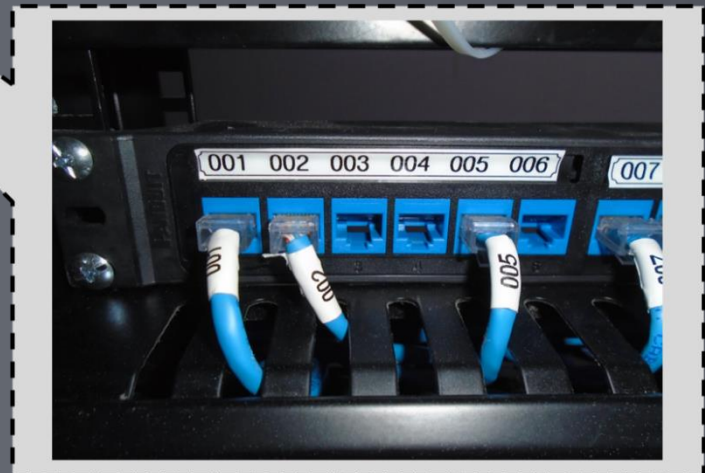


Patch Panel Labelling

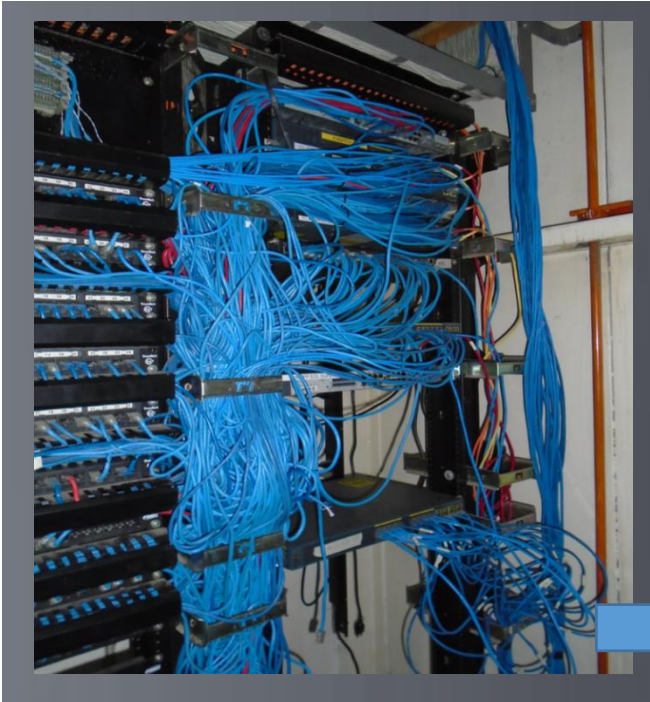


Patch cord from patch panel port '005' going to switch

IDF 'Patch Panel side'



IDF rehabilitation Works



Before

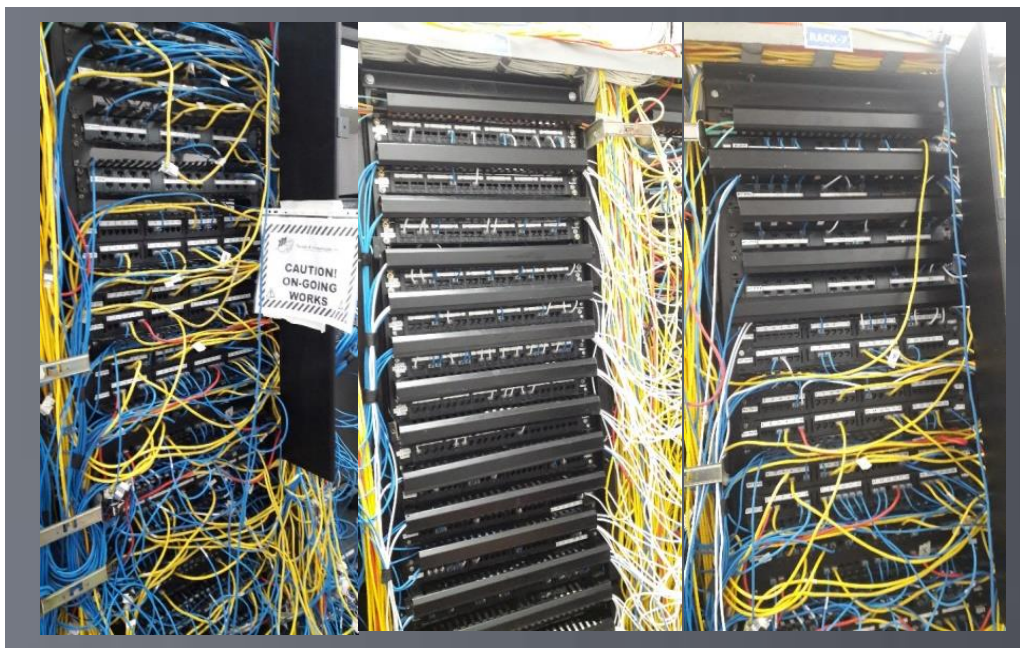


After

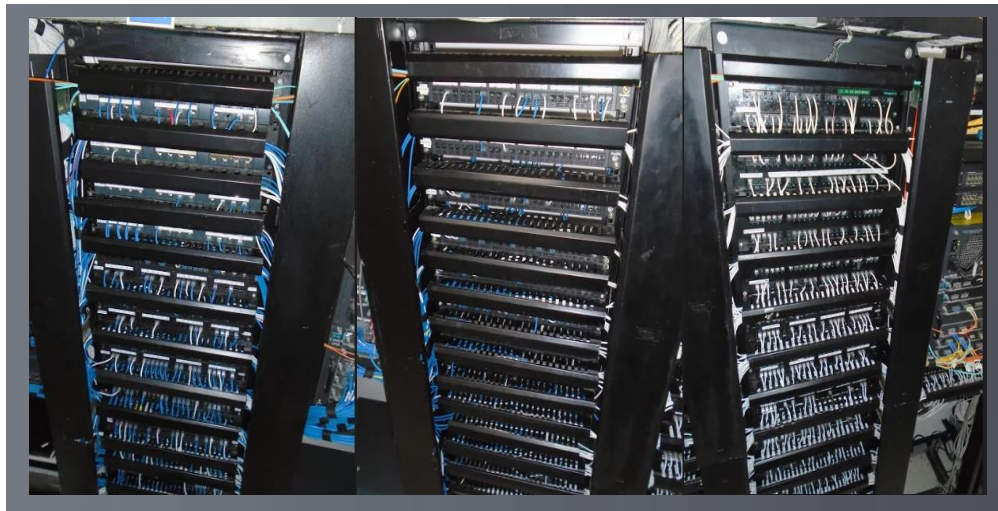


IDF rehabilitation Works

Before



After



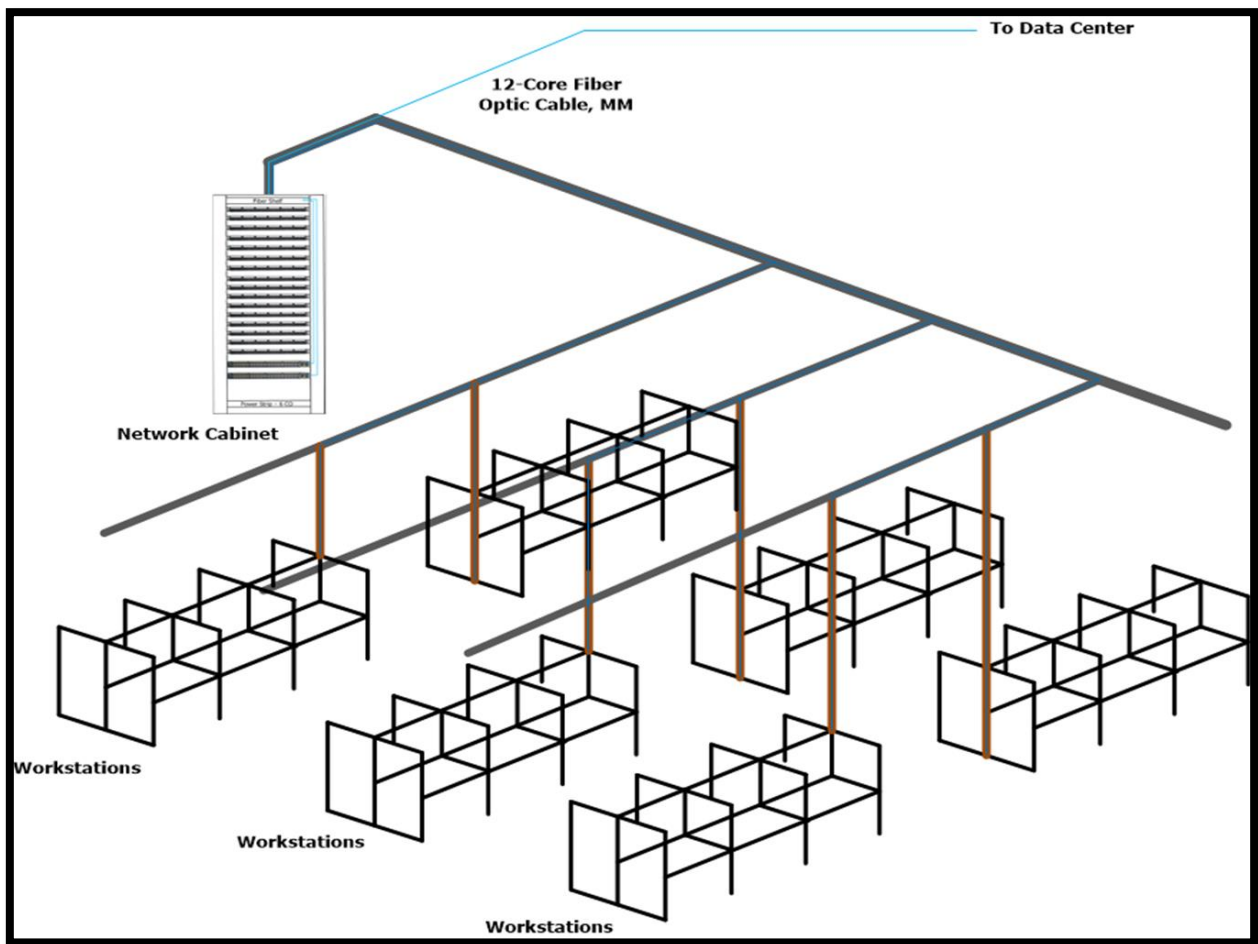
Client : BPOs
Inclusive Dates : 2016 - Current
Status : Sub-contractor

Projects:

- Installation of Structured Cabling and Relocation of existing cabling facility for BPO client (OM3 Fiber and Cat 6 Copper cables)
- Design and Installation of new Structured Cabling for BPO client
- Service provider for the installation and relocation of existing network cabling



Cable Distribution Layout



Client : Electronics Manufacturing Industry

Inclusive Dates : 2017 - Current

Status : Contractor

Projects:

- Design, installation and maintenance of Fiber Optic backbone and Copper cabling infrastructure from Data Center to production areas.
- In-house service provider for the installation, relocation and maintenance of existing network cabling



Client : Electronics Manufacturing Industry
Inclusive Dates : 2017 - Current
Status : Contractor

Projects:

- Service contractor for the repair and maintenance of existing fiber optic network cabling



Client : Manpower Agency

Inclusive Dates : 2017 - Current

Status : Contractor

Projects:


- Contractor for the installation of network structured cabling, layer 2/3 switches, CCTV system, & preparation for future network/CCTV expansion




Cable Testing

OM-3 Fiber Optic





LINKWARE
CABLE TEST MANAGEMENT SOFTWARE



Cable ID: C3-07 TO DC/F-01

Test Summary: PASS

Date / Time: 03/26/2017 11:28:09am
Headroom: 0.90 dB (Loss)
Test Limit: TIA568C Backbone MM
 Cable Type: Multimode 50

Operator: STRICKLAND
 Software Version: 2.2200
 Limits Version: 1.3700

Model: DTX-1800
 Main S/N: 9913143
 Remote S/N: 9913144
 Main Adapter: DTX-MFM2
 Remote Adapter: DTX-MFM2

Loss R->M PASS

Date / Time: 03/26/2017 11:28:09am
 Cable Type: Multimode 50
 Modal Bandwidth: 500 MHz-km
 MAIN: DTX-1800 (9913143 v2.2200)
 Module: DTX-MFM2 (9908061)
 Remote: DTX-1800R (9913144 v2.2200)
 Module: DTX-MFM2 (9908060)


Propagation Delay (ns)	304	
Length (m)	61.6	PASS
Limit	2000.0	
Result	850 nm	1300 nm
Loss (dB)	PASS	PASS
Loss Limit (dB)	0.68	0.69
Loss Margin (dB)	1.72	1.59
Reference (dBm)	1.04	0.90
	-23.30	-22.27

n = 14785
 Number of Adapters: 2
 Number of Splices: 0
 Patch Type: Multimode 50
 Patch Length1 (m): 4.0
 Patch Length2 (m): 4.0
 Patch Length3 (m): 0.3
 Reference Date: 03/26/2017 11:11:42am
 1 Jumper


Compliant Network Standards:
 FDDI
 1000BASE-SX
 10GBASE-S
 ATM 155SWL Fiber Optic
 Fibre Channel 133
 Fibre Channel 100-M5-SN-I
 Fibre Channel 200-M5F-SN-I
 10BASE-FL
 1000BASE-LX
 ATM 52 Fiber Optic
 ATM 622 Fiber Optic
 Fibre Channel 265
 Fibre Channel 100-M5E-SN-I
 Fibre Channel 400-M5-SN-I
 100BASE-FX
 10GBASE-LX4
 ATM 156 Fiber Optic
 ATM 622SWL Fiber Optic
 Fibre Channel 266SWL
 Fibre Channel 200-M5-SN-I
 Fibre Channel 400-M5F-SN-I

Cat-6 Copper Cable





LINKWARE
CABLE TEST MANAGEMENT SOFTWARE



Cable ID: D-096

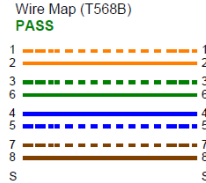
Test Summary: PASS

Date / Time: 05/05/2017 01:31:28pm
Headroom: 2.1 dB (NEXT 36-45)
Test Limit: TIA Cat 6 Channel
 Cable Type: Cat 6 UTP

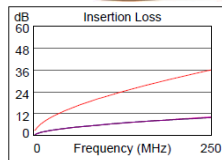
Operator: STRICKLAND
 Software Version: 2.2200
 Limits Version: 1.3700
 NVP: 69.0%

Model: DTX-1800
 Main S/N: 9913143
 Remote S/N: 9913144
 Main Adapter: DTX-CHA001
 Remote Adapter: DTX-CHA001

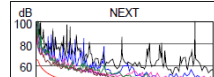
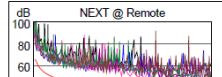
Wire Map (T568B) PASS



Length (m), Limit 100.0	[Pair 78]	28.3
Prop. Delay (ns), Limit 555		143
Delay Skew (ns), Limit 50		6
Resistance (ohms)	[Pair 78]	6.2
Insertion Loss Margin (dB)	[Pair 36]	25.5
Frequency (MHz)	[Pair 36]	250.0
Limit (dB)	[Pair 36]	35.9



	Worst Case Margin		Worst Case Value	
	MAIN	SR	MAIN	SR
PASS				
Worst Pair	36.45	12.45	36.45	12.45
NEXT (dB)	2.1	8.8	2.1	8.8
Freq. (MHz)	243.5	232.0	247.5	232.0



**WATCHOUT FOR MORE UPDATES
FROM OUR ON-GOING PROJECTS!**

Visit our site at newgenlink.com.ph





NEW GENERATION LINK

CONTRACTING & TRADING SERVICES, INC.

**THANK
YOU !**

Unit F 2nd Floor, Westgate Tower
Investment Drive, Madrigal Business Park
Ayala Alabang, Muntinlupa City
Tel (02) 8821-3699
Email sales@newgenlink.com.ph

www.newgenlink.com.ph